

Liberty 200SN and InVigor canola

Tips for maximizing Liberty 200SN efficacy



Liberty® 200SN offers unique benefits to InVigor® growers:

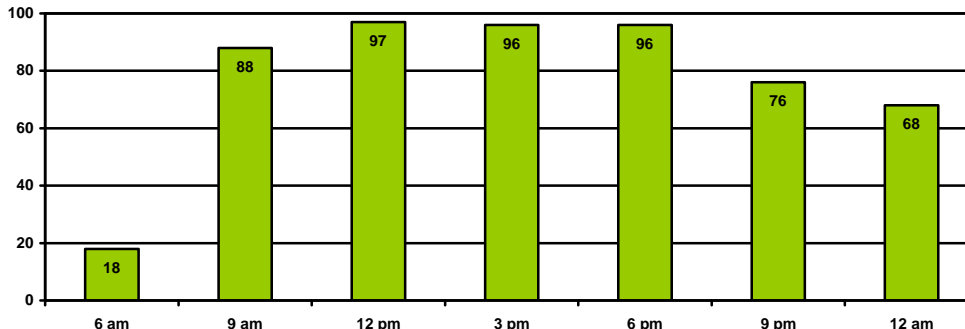
- Fast, consistent broad-spectrum grass and broadleaf weed control
- Unique herbicide group (Group 10) – a resistance management tool
- Complete crop safety
- Post-emergent contact herbicide - no re-cropping restrictions

- Apply to emerged, actively growing weeds at a rate of 2.5 L/ha (1.0 L/ac.)
 - Best control will be obtained when weeds are at the recommended leaf stages
 - For enhanced weed control, add ammonium sulphate (AMS) at 6 L/ha (2.4 L/ac.) to the tank before adding Liberty 200SN
- Use 18-20 gal/ac of water to ensure complete coverage
- Use flat fan nozzles at a 45° forward angle with a medium droplet size (AI (air induction) nozzles are not recommended)
- Rainfast in 4 hours

Ideal Application Time

- According to research conducted by Peter Sikkema, contact herbicides such as Liberty 200SN are more effective when applied during the warmest, brightest, sunlit hours of the day (9am – 6pm)

Velvetleaf Control (%) at 8 weeks after application of Liberty 200SN



- Herbicide efficacy can be decreased when applications are made in early morning (06:00am) or late in the evening (9:00pm) because herbicide interception by the leaf surface is reduced
- This Time of Day (ToD) Effect is attributed to changes in a) air temperature, b) leaf orientation, c) relative humidity (dew), and d) light intensity, throughout the day
- In general, broadleaf weeds (eg. Velvetleaf, Common ragweed, Lamb's-quarters and Redroot pigweed) have a larger change in leaf orientation throughout the day (see photos below) and are more sensitive to ToD Effect

Day



Night



(Data for graph - P. Sikkema, Photos - L. Brown,)